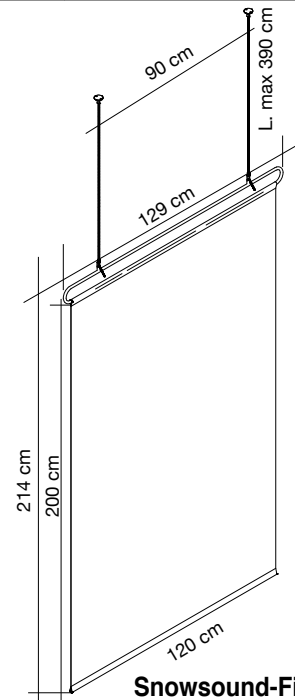


PRODUCTS LIST

SNOWSOUND

Caimi

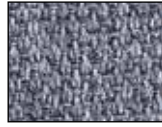
CLASP CEILING



Snowsound-Fiber 2,4 m²

Colore
Colour

FIBER 3
Vedi pag. 209
See page 209



Codice/Code
Prezzo/Price

7CLC200/CL-300

Telo fonoassorbente in poliestere **Snowsound-Fiber Textiles 3 Melange**. Telaio in acciaio cromato, 2 piastre a soffitto a 2 fori - 2 cavi in acciaio. Barra di irrigidimento inferiore. Tessuto asportabile e lavabile.

Snowsound-Fiber Textiles 3 Melange sound absorbing fabric. Chrome-plated steel frame, 2 ceiling plates with 2 holes - 2 steel cables. Lower stiffening bar. Removable and washable fabric.

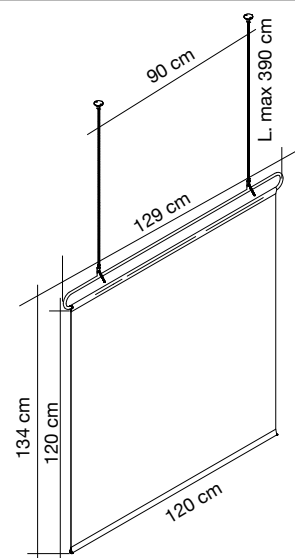
7CLC200/CL-305

Toile phono-absorbante **Snowsound-Fiber Textiles 3 Melange**. Structure en acier chromé, 2 plaques de plafond avec 2 trous - 2 câbles en acier. Barre de raidissement inférieure. Tissu amovible et lavable.

Tejido fonoabsorbente **Snowsound-Fiber Textiles 3 Melange**. Bastidor de acero cromado, 2 placas de techo con 2 agujeros - 2 cables de acero. Barra de refuerzo inferior. Tejido extraíble y lavable.

Snowsound-Fiber Textiles 3 Melange schallabsorbierendes Gewebe. Verchromter Stahlrahmen mit 2 Stahlseilen samt Deckenplatten mit 2 Montagebohrungen. Stabilisierungsleiste im unteren Ende der Stoffbahn. Stoff abnehmbar und waschbar.

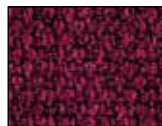
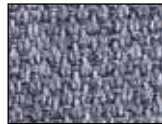
7CLC200/CL-310



Snowsound-Fiber 1,44 m²

Colore
Colour

FIBER 3
Vedi pag. 209
See page 209



Codice/Code
Prezzo/Price

7CLC120/CL-300

Telo fonoassorbente in poliestere **Snowsound-Fiber Textiles 3 Melange**. Telaio in acciaio cromato, 2 piastre a soffitto a 2 fori - 2 cavi in acciaio. Barra di irrigidimento inferiore. Tessuto asportabile e lavabile.

Snowsound-Fiber Textiles 3 Melange sound absorbing fabric. Chrome-plated steel frame, 2 ceiling plates with 2 holes - 2 steel cables. Lower stiffening bar. Removable and washable fabric.

7CLC120/CL-305

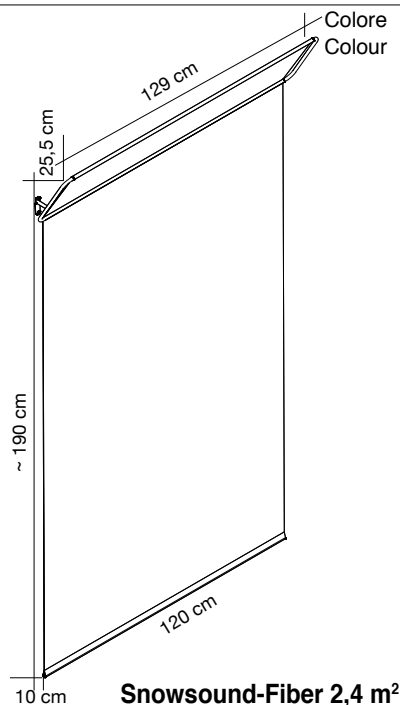
Toile phono-absorbante **Snowsound-Fiber Textiles 3 Melange**. Structure en acier chromé, 2 plaques de plafond avec 2 trous - 2 câbles en acier. Barre de raidissement inférieure. Tissu amovible et lavable.

Tejido fonoabsorbente **Snowsound-Fiber Textiles 3 Melange**. Bastidor de acero cromado, 2 placas de techo con 2 agujeros - 2 cables de acero. Barra de refuerzo inferior. Tejido extraíble y lavable.

Snowsound-Fiber Textiles 3 Melange schallabsorbierendes Gewebe. Verchromter Stahlrahmen mit 2 Stahlseilen samt Deckenplatten mit 2 Montagebohrungen. Stabilisierungsleiste im unteren Ende der Stoffbahn. Stoff abnehmbar und waschbar.

7CLC120/CL-310





Codice/Code
Prezzo/Price

Telo fonoassorbente (200x120 cm) in poliesteri **Snow-sound-Fiber Textiles 3 Melange**. Telaio per fissaggio a parete in acciaio cromato. Barra di irrigidimento inferiore. Tessuto asportabile e lavabile.

7CLW200/CL-300

Snowsound-Fiber Textiles 3 Melange sound absorbing fabric (200x120 cm). Chrome-plated steel wall mounting frame. Lower stiffening bar. Removable and washable fabric.

7CLW200/CL-305

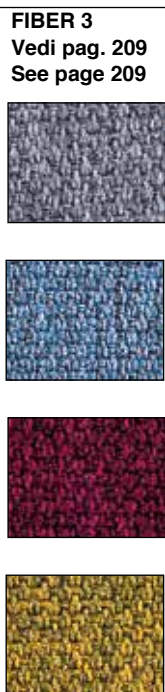
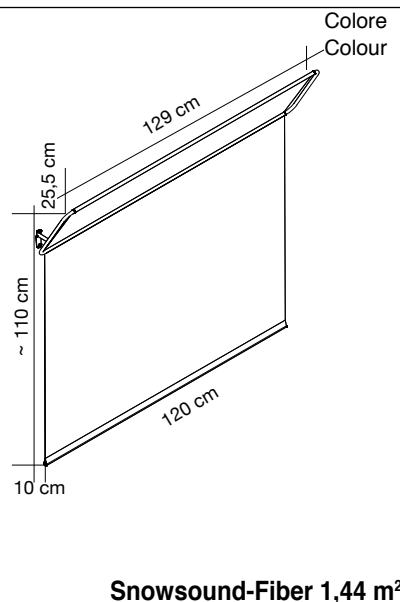
Toile phono-absorbante (200x120 cm) **Snowsound-Fiber Textiles 3 Melange**. Cadre de montage mural en acier chromé. Barre de raidissement inférieure. Tissu amovible et lavable.

7CLW200/CL-306

Tejido fonoabsorbente (200x120 cm) **Snowsound-Fiber Textiles 3 Melange**. Bastidor de montaje en pared de acero cromado. Barra de refuerzo inferior. Tejido extraible y lavable.

7CLW200/CL-310

Snowsound-Fiber Textiles 3 Melange schallabsorbierendes Gewebe (200x120 cm). Verchromter Wandstahlrahmen mit 2 Stahlseilen samt Deckenplatten mit 2 Montagebohrungen. Stabilisierungsleiste im unteren Ende der Stoffbahn. Stoff abnehmbar und waschbar.



Codice/Code
Prezzo/Price

Telo fonoassorbente (120x120 cm) in poliesteri **Snow-sound-Fiber Textiles 3 Melange**. Telaio per fissaggio a parete in acciaio cromato. Barra di irrigidimento inferiore. Tessuto asportabile e lavabile.

7CLW120/CL-300

Snowsound-Fiber Textiles 3 Melange sound absorbing fabric (120x120 cm). Chrome-plated steel wall mounting frame. Lower stiffening bar. Removable and washable fabric.

7CLW120/CL-305

Toile phono-absorbante (120x120 cm) **Snowsound-Fiber Textiles 3 Melange**. Cadre de montage mural en acier chromé. Barre de raidissement inférieure. Tissu amovible et lavable.

7CLW120/CL-306

Tejido fonoabsorbente (120x120 cm) **Snowsound-Fiber Textiles 3 Melange**. Bastidor de montaje en pared de acero cromado. Barra de refuerzo inferior. Tejido extraible y lavable.

7CLW120/CL-310

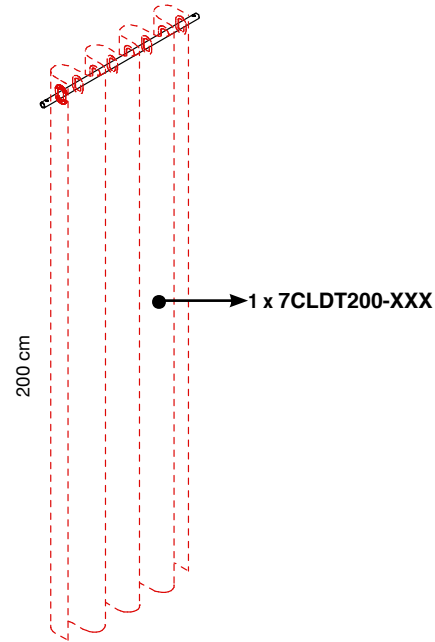
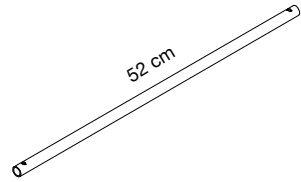
Snowsound-Fiber Textiles 3 Melange schallabsorbierendes Gewebe (120x120 cm). Verchromter Wandstahlrahmen mit 2 Stahlseilen samt Deckenplatten mit 2 Montagebohrungen. Stabilisierungsleiste im unteren Ende der Stoffbahn. Stoff abnehmbar und waschbar.



CLASP DIVIDER

design studio A+B Dominoni Quaquaro
Snowsound® Fiber by Caimi Brevetti

7CLD60-CL



Asta in acciaio cromato L. 52 cm. Per 1 telo cod. 7CLDT200-XXX (XXX = variante colore)

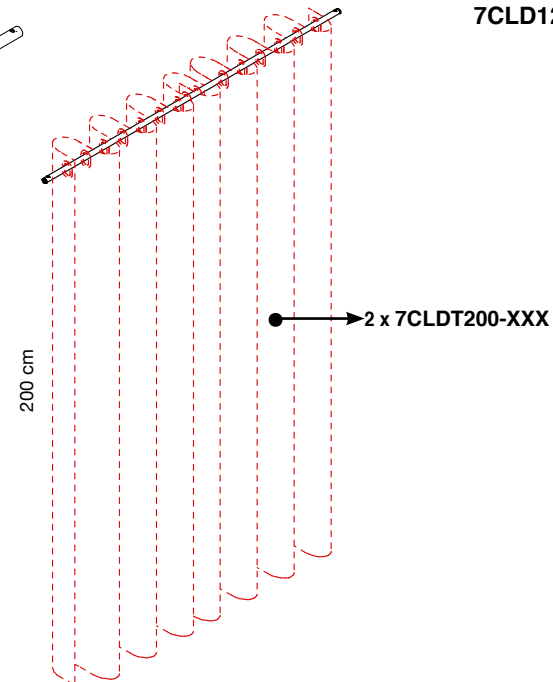
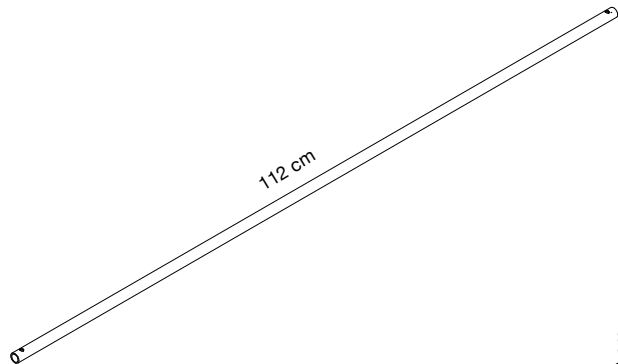
Chrome-plated steel rod L. 52 cm. For 1 fabric cod. 7CLDT200-XXX (XXX = color variant)

Tige en acier chromé L. 52 cm. Pour 1 toile cod. 7CLDT200-XXX (XXX = variante couleur)

Barra de acero cromado L. 52 cm. Para 1 tejido cód. 7CLDT200-XXX (XXX = variante de color)

Stange aus verchromtem Stahl L. 52 cm. Für 1 Stoffbahn Art.Nr. 7CLDT200-XXX (XXX = Farbvariante)

7CLD120-CL



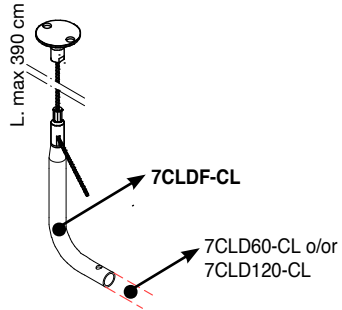
Asta in acciaio cromato L. 112 cm. Per 2 teli cod. 7CLDT200-XXX (XXX = variante colore)

Chrome-plated steel rod L. 112 cm. For 2 fabrics cod. 7CLDT200-XXX (XXX = color variant)

Tige en acier chromé L. 112 cm. Pour 2 toiles cod. 7CLDT200-XXX (XXX = variante couleur)

Barra de acero cromado L. 112 cm. Para 2 tejidos cód. 7CLDT200-XXX (XXX = variante de color)

Stange aus verchromtem Stahl L. 112 cm. Für 1 Stoffbahn Art.Nr. 7CLDT200-XXX (XXX = Farbvariante)



7CLDF-CL

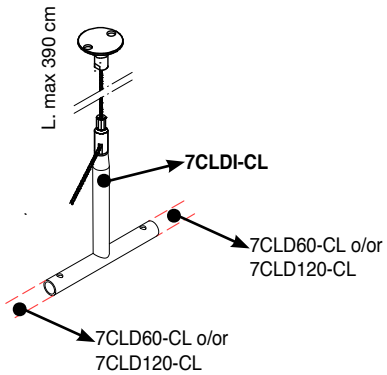
Supporto terminale completo di cavo e piastra a soffitto a 2 fori. Da utilizzare per appendamento a soffitto delle aste cod. 7CLD60-CL e 7CLD120-CL. Consente di mantenere sempre il passo 60 o 120 cm

Terminal support complete with cable and 2-holes ceiling plate. To be used for ceiling hanging of rods code 7CLD60-CL and 7CLD120-CL. Allows you to always keep the 60 cm or 120 cm module.

Support d'extrémité complet avec câble et plaque de plafond à 2 trous. A utiliser pour l'accrochage au plafond des tiges code 7CLD60-CL et 7CLD120-CL. Permet de toujours garder un pas de 60 ou 120 cm

Soporte final completo con cable y placa de techo de 2 orificios. Para colgar en el techo las barras código 7CLD60-CL y 7CLD120-CL. Permite mantener siempre la inclinación de 60 o 120 cm.

Endstück komplett mit Stahlseil und Deckenplatte mit 2 Montagebohrungen. Zur Verwendung bei der Deckenmontage von Stangen Art. Nr. 7CLD60-CL und 7CLD120-CL. Erlaubt die Einhaltung der Teilung 60 oder 120 cm.



7CLDI-CL

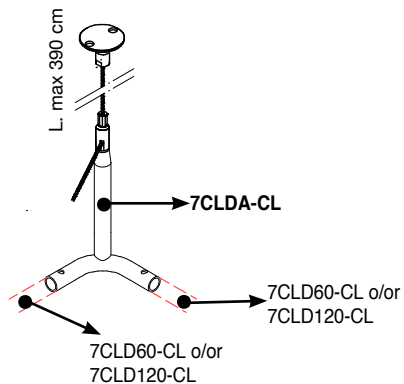
Supporto centrale completo di cavo e piastra a soffitto a 2 fori. Da utilizzare per unione lineare e appendamento a soffitto delle aste cod. 7CLD60-CL e 7CLD120-CL. Consente di mantenere sempre il passo 60 o 120 cm

Central support complete with cable and 2-holes ceiling plate. To be used for linear connection and ceiling hanging of rods code 7CLD60-CL and 7CLD120-CL. Allows you to always keep the 60 cm or 120 cm module.

Support central complet avec câble et plaque de plafond à 2 trous. A utiliser pour le raccordement linéaire et l'accrochage au plafond des tiges code 7CLD60-CL et 7CLD120-CL. Permet de toujours garder un pas de 60 ou 120 cm

Soporte central completo con cable y placa de techo de 2 orificios. Se utiliza para la conexión lineal y la suspensión en el techo de las barras código 7CLD60-CL y 7CLD120-CL. Permite mantener siempre la inclinación de 60 o 120 cm.

Mittelstück komplett mit Stahlseil und Deckenplatte mit 2 Montagebohrungen. Zur Verwendung für die lineare Verbindung und Deckenabhängung von Stangen Art. Nr. 7CLD60-CL und 7CLD120-CL. Erlaubt die Einhaltung der Teilung 60 oder 120 cm.



7CLDA-CL

Supporto angolare completo di cavo e piastra a soffitto a 2 fori. Da utilizzare per unione angolare e appendamento a soffitto delle aste cod. 7CLD60-CL e 7CLD120-CL. Consente di mantenere sempre il passo 60 o 120 cm

Corner support complete with cable and 2-holes ceiling plate. To be used for angular connection and ceiling hanging of rods code 7CLD60-CL and 7CLD120-CL. Allows you to always keep the 60 cm or 120 cm module.

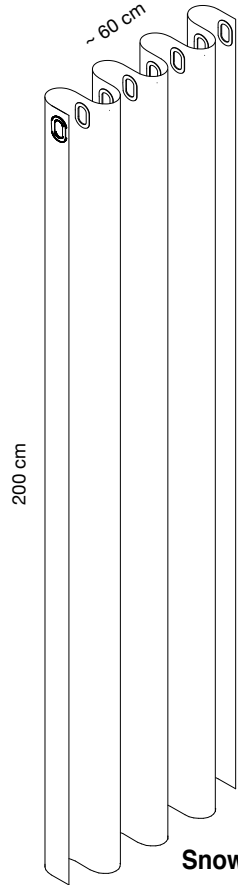
Support d'angle complet avec câble et plaque de plafond à 2 trous. A utiliser pour le raccordement angulaire et l'accrochage au plafond des tiges code 7CLD60-CL et 7CLD120-CL. Permet de toujours garder un pas de 60 ou 120 cm

Soporte esquinero completo con cable y placa de techo de 2 orificios. Se utiliza para la conexión angular y la suspensión en el techo de las barras código 7CLD60-CL y 7CLD120-CL. Permite mantener siempre la inclinación de 60 o 120 cm.

Eckstück komplett mit Stahlseil und Deckenplatte mit 2 Montagebohrungen. Zur Verwendung für die Winkelverbindung und Deckenabhängung von Stangen Art. Nr. 7CLD60-CL und 7CLD120-CL. Erlaubt die Einhaltung der Teilung 60 oder 120 cm.

CLASP DIVIDER

design studio A+B Dominoni Quaquaro
Snowsound® Fiber by Caimi Brevetti



Colore
Colour

FIBER 3
Vedi pag. 209
See page 209



7CLDT200-300



7CLDT200-305



7CLDT200-306



7CLDT200-309



7CLDT200-310

Codice/Code
Prezzo/Price

Telo fonoassorbente (200x138 cm) in poliestere **Snowsound-Fiber Textiles 3 Melange**.

Per asta cod. 7CLD60-CL utilizzare 1 telo. Per asta cod. 7CLD120-CL utilizzare 2 teli

Snowsound-Fiber Textiles 3 Melange sound absorbing fabric (200x138 cm). For rod code 7CLD60-CL, use 1 fabric. For rod code 7CLD120-CL, use 2 fabrics.

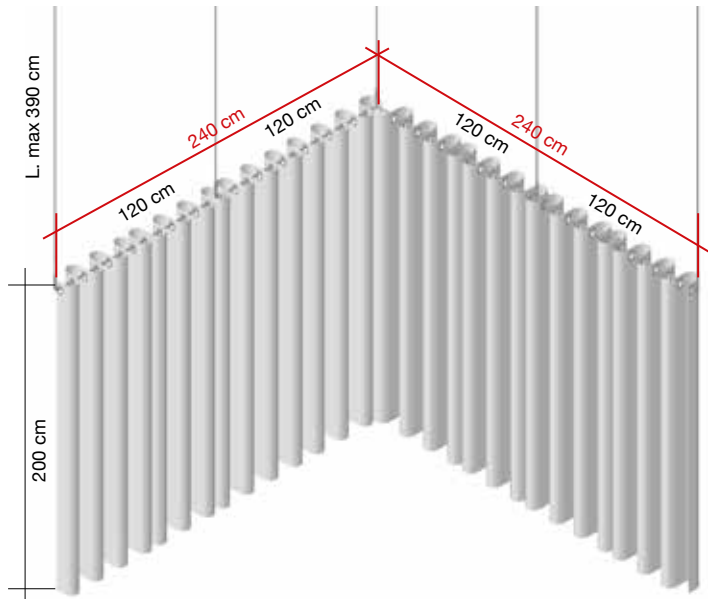
Toile phono-absorbante (200x138 cm) **Snowsound-Fiber Textiles 3 Melange**. Pour la tige code 7CLD60-CL, utiliser 1 toile. Pour la tige code 7CLD120-CL utiliser 2 toiles

Tejido fonoabsorbente (200x138 cm) **Snowsound-Fiber Textiles 3 Melange**. Para el código de barras 7CLD60-CL use 1 tejido. Para el código de barras 7CLD120-CL utilice 2 tejidos

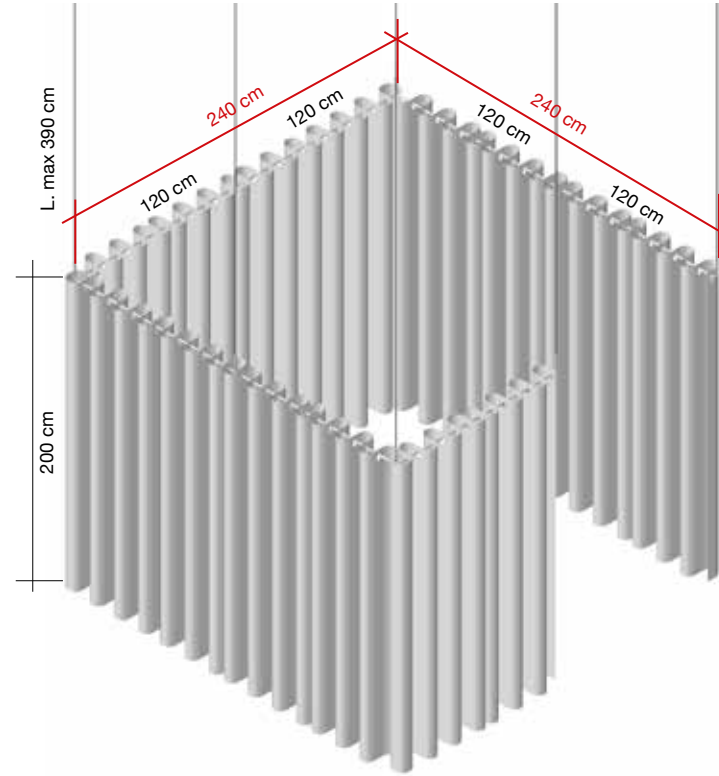
Snowsound-Fiber Textiles 3 Melange Stoffbahn aus schallabsorbierendem Gewebe (200x138 cm).

Für die Art. Nr. 7CLD60-CL verwenden Sie 1 Gewebbahn. Für die Art. Nr. 7CLD120-CL verwenden Sie 2 Gewebbahnen.

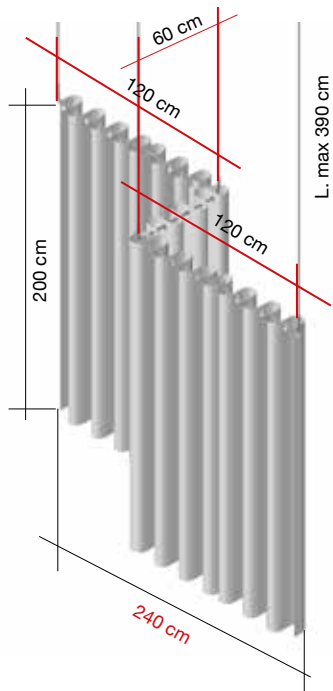
Snowsound-Fiber 2,8 m²



- 4 - 7CLD120-CL
- 2 - 7CLDF-CL
- 2 - 7CLDI-CL
- 1 - 7CLDA-CL
- 8 - 7CLDT200-XXX



- 7 - 7CLD120-CL
- 2 - 7CLDF-CL
- 3 - 7CLDI-CL
- 3 - 7CLDA-CL
- 14 - 7CLDT200-XXX



- 2 - 7CLD120-CL
- 1 - 7CLD60-CL
- 2 - 7CLDF-CL
- 2 - 7CLDA-CL
- 5 - 7CLDT200-XXX



Deze informatie is afkomstig van de website van Zero-Z design / Akoestiekexpert.nl.

Voor vragen, toelichting en meer informatie kunt u contact opnemen met:

Zero-Z design

Jasmijnstraat 6a	Modem 20b
3732 EC De Bilt	7741 MJ Coevorden

T +31 (0)30 2201297

F +31 (0)30 2210692

E info@zero-z-design.nl

W www.zero-z-design.nl

www.akoestiekexpert.nl

